



# Year One Parents' Information Meeting

Autumn Term 2025

# Welcome to Year One!

## In Year One

- ▶ We have been settling into our new routines
- ▶ We have been finding out how we learn in our new classroom



# Moving up from Reception

## What is the same?

- ▶ Friends
- ▶ Uniform
- ▶ Book bags, water bottles, coats, PE kit
- ▶ Home reading and learning activities
- ▶ Keeping your children safe
- ▶ Hand washing and sanitiser
- ▶ Morning fruit snack and milk



# Phonics and RWI

- We use Read Write Inc. to teach phonics
- This combines writing skills alongside reading
- There is a focus on accuracy and fluency
- The scheme develops reading comprehension
- There is a focus on segmenting words for spelling



# Home Learning

## Home Learning Books

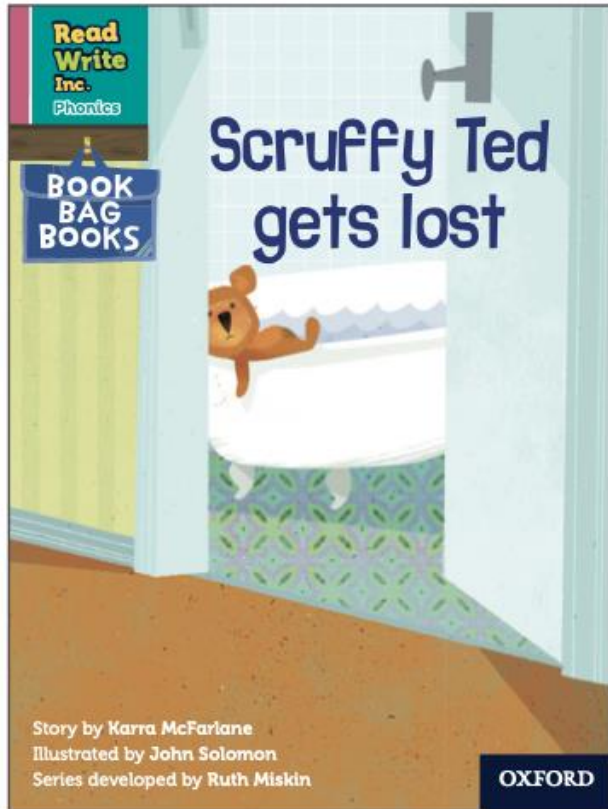
- ▶ These books are for the weekly learning tasks. They will go out on Friday. Please help and guide your child to use them appropriately.



## Home Reading

- ▶ You will receive a pack of 2 books on a Tuesday.
- ▶ You were given a login in Reception to access an online copy of a Read Write Inc book that has been read in school. This can still be used and there are lots of resources there to access.
- ▶ Please note each home reading session – date and pages read- along with a brief comment
- ▶ We change books once a week on Monday
- ▶ We will be assessing half termly and will keep you informed of the progress your child is making in reading

# Phonics and RWI



## Reading books

**RWI Book bag book** to read independently.

There are clear instructions inside the books to explain how to use them to support your child's learning.

**Sharing book** with an adult (paired reading)

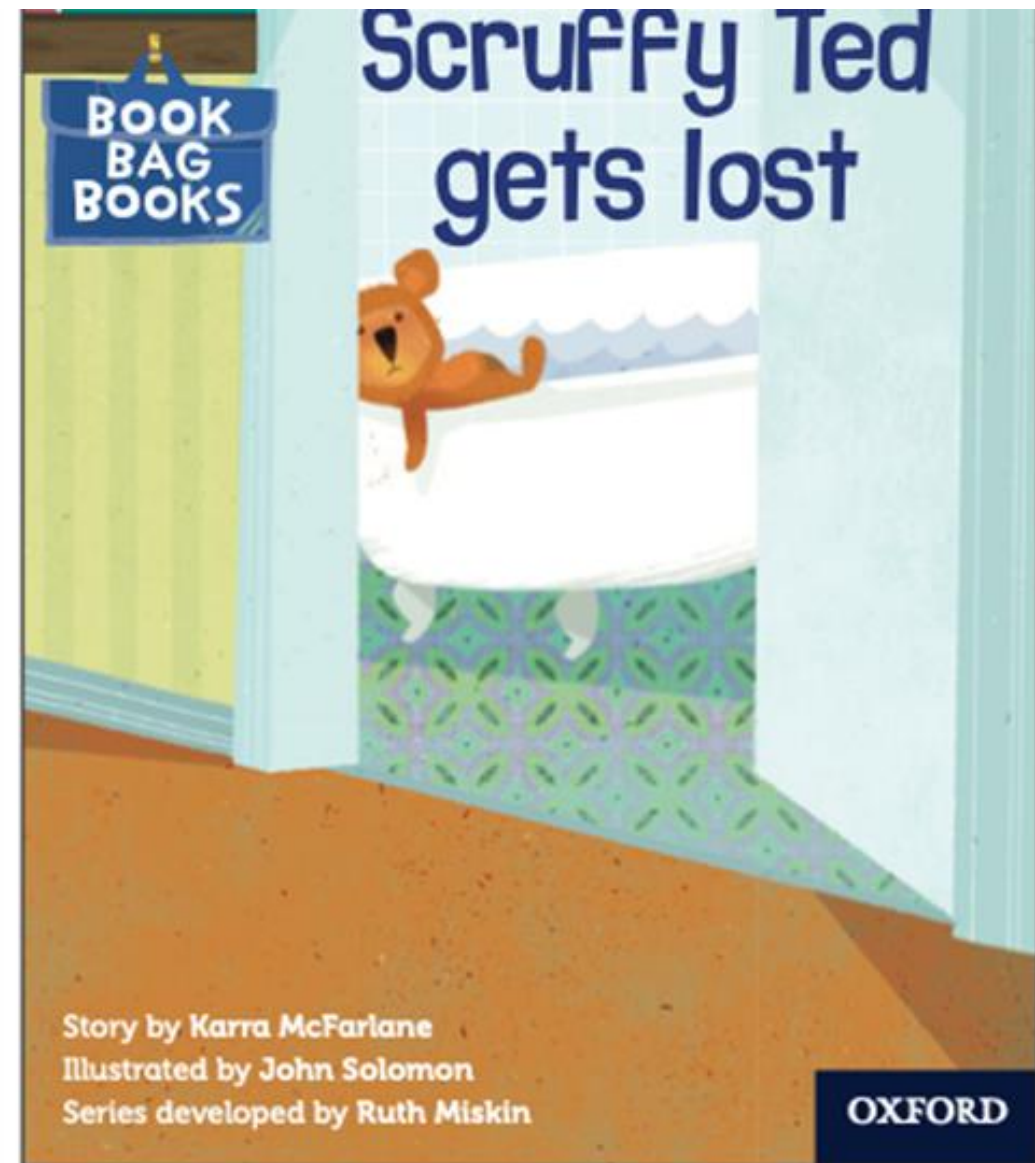
**Online RWI book** to revisit a class text for fluency

# How to share a 'sharing book'

- read the title with your child and discuss the front cover (and the 'blurb')
- look through the book before you read it together
- discuss the pictures and events
- read the book with your child: they can read some words that use sounds they know
- talk about the story/ facts
- use who, what, where or when questions
- please remember, this book is not fully decodable and may include sounds which your child does not yet know



Date	Book title and page number	Comments
16.9.22	Scruffy Ted gets Lost	Read green and red words and the story. Able to Fred Talk unknown words
17.9.22	Scruffy Ted gets Lost	More fluent today and was able to retell the story using the pictures.
18.9.22	Scruffy Ted gets Lost	Quickly recognising the red words :) Much more fluent today. Answered all the questions.





# Phonics and RWI

Sets 1, 2, 3

Red words - **said**

Nonsense (alien) words - croab

**Set 1** These mainly consist of one letter sounds along with ch, sh, th, nk and ng

**Set 2** ay, ee, igh, ow, oo, oo, or, ar, air, ir, ou, oy

**Set 3** teaches alternative spellings for taught sounds ea, oi, a-e, i-e, ai, oa, o-e, u-e, aw, are (as in care), ur, er, ow (as in cow), ew, along with ire, ear, ure, tion, tious and cious.

We will send sheets for the Set 3 sounds home as we learn them, please be aware your child may not be ready for them right now but you will have access to them when they are. Stick them in the home learning book if that is helpful).

Please ensure that only pure sounds are used (e.g. /r/ should not have an “uh” after it)

There are videos of teachers modelling this on the school website.

<https://www.bramley.surrey.sch.uk/page/?title=Year+1&pid=46>

# Year One Phonics

In the Summer Term of Year One, all children take part in a Phonics Screen.

Real words

stamp



Alien words

croab

Wil cover set 1 (single sounds) and sets 2 and 3 (special friends)

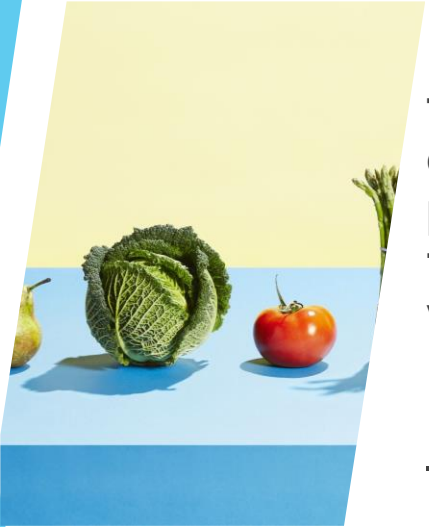
In real and alien words

# Snack time

- ▶ We provide a piece of fruit or vegetable for a morning snack.
- ▶ We encourage the children to try something from the available selection.
- ▶ There is no need to provide a snack from home, unless it is for a specific health reason and has been pre arranged with the class teacher.

▶ We can still offer children milk in KS1. On occasions, to avoid food waste, we may offer milk to all children. Once your child is over 5, it is still possible for them to have milk, but it needs to be paid for. If you would like to sign your child up to have milk with their fruit at snack time, please follow the link on the school website.

▶ <https://www.bramley.surrey.sch.uk/page/?title=School+Meals&pid=15>



# What is different?

- ▶ Classroom
- ▶ Staff (some!)
- ▶ Increasing expectation of independence
- ▶ A different curriculum



Psalm 119 (105) "Your word is a lamp to guide me and a light for my path." Rooted in Christian values. Seek Within, Wonder Why, Reach out, Aim High.



## Our Classroom



Year 1's learning is being run as a continuous provision setting. This means that the children are always able access learning opportunities linked to carpet inputs, both inside and outside. There are a number of linked tasks to complete each week, together with focus activities (tutor table). This means that we have a variety of learning spaces.

## Year One Staff

Mrs Baker - class teacher

Mrs Illingworth – TA (Monday all day, Thursday and Friday mornings)

Mrs Cardozo – TA (Tuesday and Wednesday all day)

Mr Rising – for ppa cover on Thursday afternoon

Psalm 119 (105) "Your word is a lamp to guide me and a light for my path." Rooted in Christian values. Seek Within, Wonder Why, Reach out, Aim High.



# Year One Curriculum

We follow and enhance the National Curriculum.

- ❖ English (Drawing Club)
- ❖ Maths
- ❖ Science
- ❖ Art and Design
- ❖ Computing
- ❖ Design and Technology
- ❖ Geography
- ❖ History
- ❖ Music
- ❖ PE

We also teach Personal Social Health Economic Education (PSHE)  
which includes Relationship and Health Education (RHE)

Psalm 119 (105) "Your word is a lamp to guide me and a light for my path." Rooted in Christian values. Seek Within, Wonder Why, Reach out, Aim High.



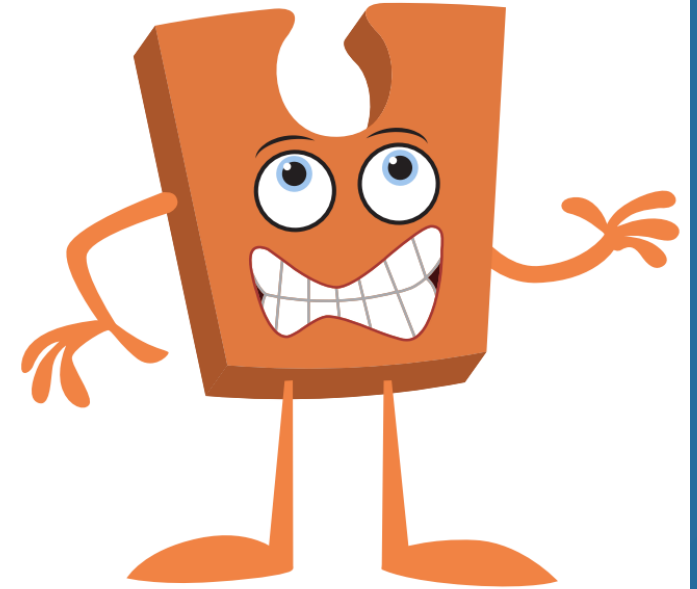
Jigsaw is our scheme for teaching PSHE. It is a mindful approach to PSHE bringing together

- Personal, Social, Health Education
- emotional literacy
- social skills
- spiritual development

There is a weekly lesson.

Jigsaw is being used across KS1 with both year groups working on the same theme (Puzzle) at the same time. This enables each Puzzle to start with an introductory assembly, generating a focus for adults and children alike.

If there is any aspect of the curriculum on which you would like clarification, please do ask. We will send out details of any topic area that would benefit from your parental guidance.



# Forest School

## When

**Year 1 takes part in Forest School on Tuesday afternoons with Mrs Miles.**



Psalm 119 (105) "Your word is a lamp to guide me and a light for my path." Rooted in Christian values. Seek Within, Wonder Why, Reach out, Aim High.

# Volunteering

As a school we welcome volunteers 😊

## Types of volunteering

- ▶ Helping on school trips and outings
- ▶ Helping in and around the classroom including hearing readers and practising phonics
- ▶ Helping with forest school/outdoor learning
- ▶ Helping with one off activities e.g cooking, arts week

If you are interested in a career in teaching or as teaching assistant and would like to gain some experience please speak to the Senior Leadership Team.

## How to volunteer

- ▶ Think about how your child will react to having you in the classroom and separating when you leave. It's advisable to volunteer in a different classroom to your child.
- ▶ Apply for a DBS (disclosure and barring service) through the school.
- ▶ Attend a short training session to understand safeguarding and confidentiality and how to support reading. We will inform you of a slot that would benefit the children.

# Attendance and absences (Main school)

**We expect all children to attend school every day unless they are unwell.**

**If your child is unwell please call the office and speak to Becky or leave a message including details of their illness.**

**If your child has diarrhea or sickness they can return to school 48 hours after their last bout of illness. This is in line with Public Health England guidance.**

**Routine doctors and dentist appts please try and make these after school or in the holidays.**

**All absences from school, with the exception of illness, require parents to fill in an absence form and these are available from the school office or on our website.**

**Please note holidays within term time cannot be authorised. Holidays that are unauthorised within term time are at risk of a fine being issued.**



# Communication

► [office@bramley.surrey.sch.uk](mailto:office@bramley.surrey.sch.uk)

Becky will deal with these emails and if necessary will pass on relevant information to the class teachers.





# Any questions?

Psalm 119 (105) "Your word is a lamp to guide me and a light for my path." Rooted in Christian values. Seek Within, Wonder Why, Reach out, Aim High.

The background features abstract, overlapping geometric shapes in various shades of blue, ranging from light sky blue to deep navy blue. These shapes are primarily located on the right side of the slide, creating a modern, dynamic feel.

# Thank you Enjoy the rest of your evening!

Psalm 119 (105) "Your word is a lamp to guide me and a light for my path." Rooted in Christian values. Seek Within, Wonder Why, Reach out, Aim High.